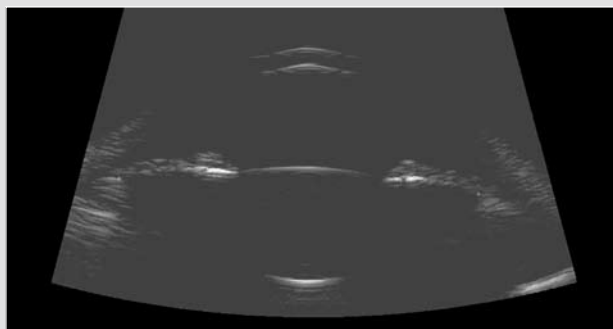
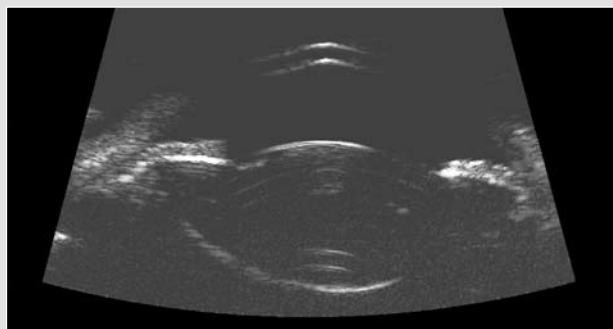


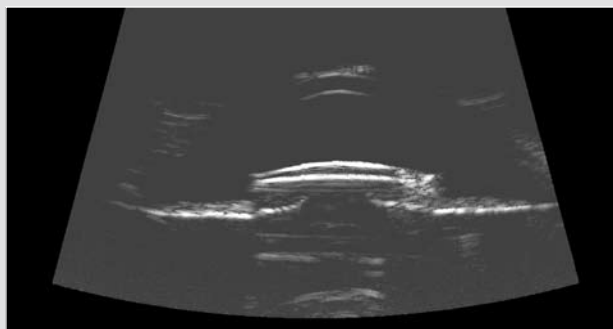
CASE STUDY ONE: **20 MHz B-Scan | Wide Field Anterior Segment**



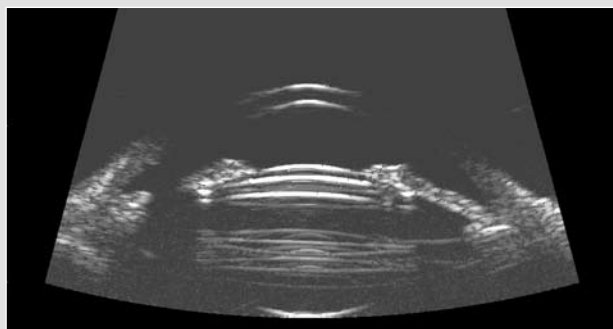
**Normal Anterior Segment, Cornea to Posterior Lens**  
(Horizontal Axial View)  
Sulcus-to-Sulcus.



**Anterior Segment, Cornea to Posterior Lens**  
(Horizontal Axial View)  
Enlarged cataractous lens causing narrowing of angle.



**Iris-Fixated Intraocular Lens from the Mid 1980s**  
(Vertical Axial View)



**Phakic IOL in Hyperopic Patient** (Vertical Axial View)  
Note double IOL echo, then anterior/posterior lens echoes. Reduplication echoes appear within the crystalline lens. Note iridotomy on left.

**Headquarters**

82 Gilbert Street  
Adelaide, SA, 5000 AUSTRALIA  
+61 8 8104 5200

**Japan**

4-3-7 Miyahara 4F, Yodogawa-ku  
Osaka 532-0003 JAPAN  
+81 6 6396 2250

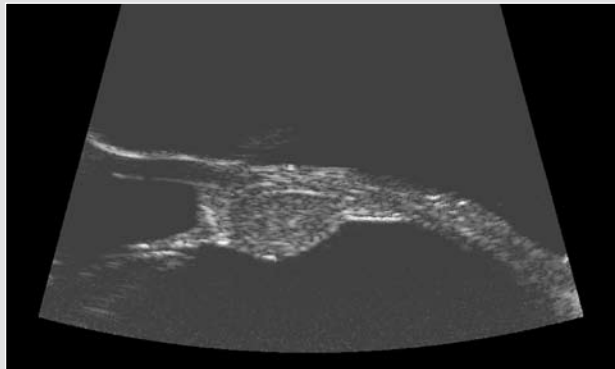
**USA**

7138 Shady Oak Road  
Minneapolis, MN, 55344 USA  
1 800 824 7444

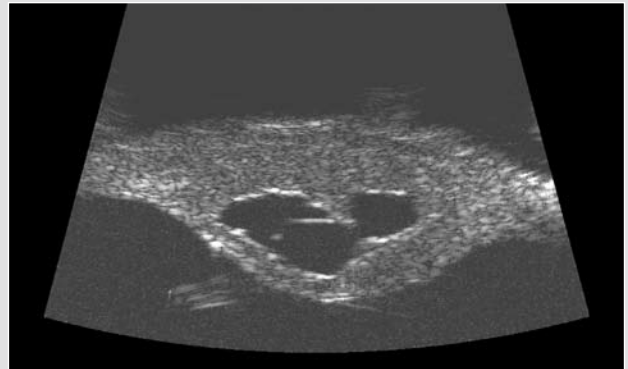
**Europe Support Center**

108, avenue Marx Dormoy  
63000 Clermont-Ferrand FRANCE  
+33 4 73 34 18 55

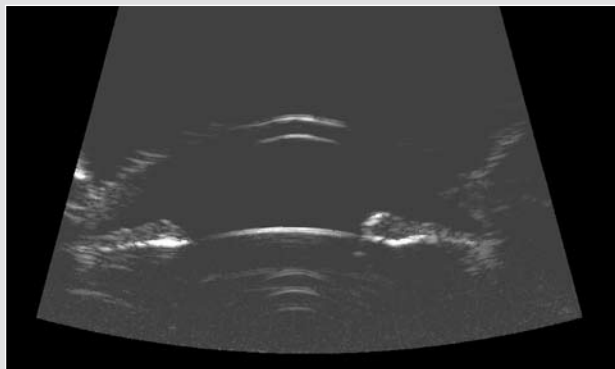
CASE STUDY TWO: 20 MHz B-Scan | Wide Field Anterior Segment



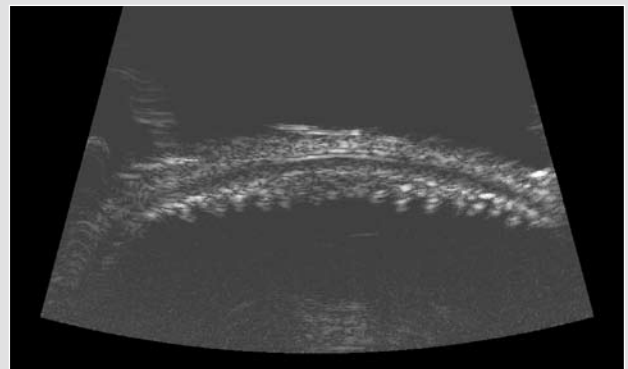
**Ciliary Body Melanoma with Pigmentation in the Angle** (Longitudinal View)



**Ciliary Body Melanoma with Cystic Spaces** (Vertical Transverse View)



**Pigmented Iris Lesion** (Axial View of 1:30)



**Ciliary Processes and Suprachoroidal Space** (Vertical Transverse View)

**Headquarters**

82 Gilbert Street  
Adelaide, SA, 5000 AUSTRALIA  
+61 8 8104 5200

**Japan**

4-3-7 Miyahara 4F, Yodogawa-ku  
Osaka 532-0003 JAPAN  
+81 6 6396 2250

**USA**

7138 Shady Oak Road  
Minneapolis, MN, 55344 USA  
1 800 824 7444

**Europe Support Center**

108, avenue Marx Dormoy  
63000 Clermont-Ferrand FRANCE  
+33 4 73 34 18 55