



Lasers and Imaging



| PHOTOCOAGULATION |



| PHOTODISRUPTION |



| SLT PHOTOREGENERATION |



| DIAGNOSTIC ULTRASOUND |

Diagnostic Ultrasound

Innovative Imaging has long been considered the premier name in diagnostic ophthalmic ultrasound technology – which is why it is now part of the Ellex product family.

The New Generation Eye Cubed™ from Ellex makes it possible to evaluate ocular structures more clearly than ever before. Renowned for its unparalleled sensitivity, the system features real-time imaging, advanced movie mode using the fastest sampling rate available, and internal memory for storage of measurements – all of which advance and improve your diagnostic efforts.

In addition, the Eye Cubed's superior image clarity and flexible measurements allow for thorough pre-operative and post-operative assessment of ocular anatomy – essential in optimizing premium IOL outcomes.



NEW
Innovative
Imaging
from Ellex

eyecubed | 

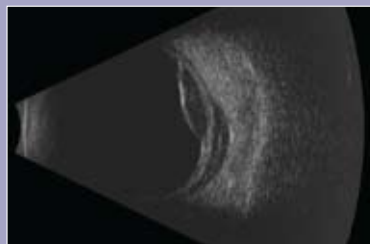
Premier Diagnostic Ultrasound

The intuitive, easy-to-use Eye Cubed™ makes it possible for you to see more during pre-op and post-op evaluation of ocular structures.

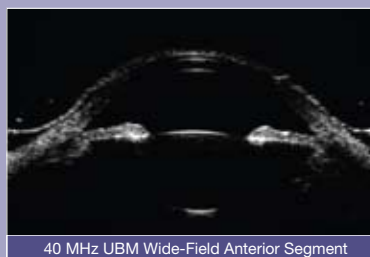
In addition, customized configuration of A-Scan and B-Scan modes ensures that the Eye Cubed™ meets all of your needs for both the posterior and anterior segments.

- **Superior Image Quality**
- **Highest Signal-to-Noise Ratio**
- **High-Speed Imaging**
- **Advanced Movie Technology**
- **A-Scan Modes**
- **B-Scan Modes**

B-Scan Modes



10 MHz Posterior Segment

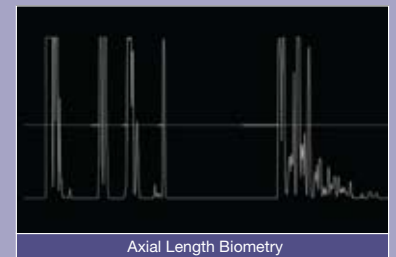


40 MHz UBM Wide-Field Anterior Segment

A-Scan Modes



Standardized Diagnostic



Axial Length Biometry



One Powerful Vision

Photodisruption

The tough demands of today's new-generation intraocular lenses (IOLs) require an ever-increasing level of accuracy during YAG surgery. For this reason, Ellex YAG lasers feature state-of-the-art technology designed to help you achieve precise optical breakdown at the lowest energy levels possible. Add to that our exquisite focusing, and you will experience higher accuracy, more control, and reduced potential for side effects. The Super Q® provides a portable solution for private clinics, while the Ultra Q™ is designed specifically for hospital use. Both systems feature a fully integrated design which optimizes treatment and provides a number of advantages, including more stable, reliable and consistent energy delivery.



superQ®

The Essential YAG Laser

The Super Q® is the ophthalmic industry's favorite YAG laser. Designed for easy transport between multiple clinics, the Super Q® provides such precise and reliable treatment for anterior eye disease that it has been the world's best-selling YAG ophthalmic laser since its introduction in 1996.

- **Low Energy Breakdown**
- **Fine, Two-Point Focusing System**
- **Solid-State Q-Switch**
- **Transportable in Two Portable Cases**



ultraQ™

Microsurgical YAG Laser

For capsulotomy and iridotomy procedures, the Ultra Q™ delivers accuracy and control while reducing the potential for side effects. In particular, ophthalmologists working with the newest generation of intraocular lenses (IOLs) rely on its consistent optical breakdown at ultra-low energy to deliver optimal patient results.

- **Ultra Gaussian Beam Mode Enables Lower Energy Treatments**
- **Fine, Two-Point Focusing System**
- **Solid-State Q-Switch**
- **Fast, 3 Hertz Firing Rate**

Also available with SLT, see Tango.

Photocoagulation

Ellex solid-state photocoagulators deliver safe, predictable and consistent energy through a true, continuous-wave laser beam with real-time power control throughout the selected exposure time. This creates superior energy distribution from beginning to end of exposure, and across the full diameter of the spot. In addition, our True Spot™ optical system combines the benefits of a parfocal system with low power density at the cornea. The Integre® family of integrated photocoagulators – Integre®, Integre Yellow™ and Integre Duo™ – offers a design in which the laser and slit lamp are optimally integrated for greater efficiency and reliability, as well as for comfort and improved ease of use. The portable, versatile Ellex Solitaire™ can be configured for the clinic, the operating room, or both.



integre®

Integrated Green Laser

The Integre® is the only green laser that integrates the laser cavity and slit lamp – resulting in more stable, reliable and consistent energy delivery.

- **1.5 Watt 532nm Green Laser**
- **Optimized Retina Slit Lamp**
- **No Exposed Fiber Optic Cables**



integreyellow™

Integrated Yellow Laser

The Integre Yellow™ is the first and only high-power yellow laser that integrates the laser cavity and slit lamp for greater efficiency and reliability.

- **1.5 Watt 561nm Yellow Laser**
- **Optimized Retina Slit Lamp**
- **No Exposed Fiber Optic Cables**



integreduo™

Red and Green Photocoagulator

The Integre Duo™ is the first solid-state photocoagulator to deliver 670nm red and 532nm green wavelengths in a streamlined, integrated design.

- **1.5 Watt 532nm Green Laser**
- **1.0 Watt 670nm Red Laser**
- **Proprietary Dual Laser Cavity**

solitaire™

Versatile Green Laser

The Solitaire™ can be configured for the clinic, the operating room, or both – with dual ports, programmable procedure memory, and compatibility with a wide variety of industry standard slit lamp and surgical microscope delivery systems.

- **High Power 532nm Green Laser**
- **Dual Fiber Port Option**
- **Programmable Procedure Memory**
- **Laser Indirect Ophthalmoscope**
- **Endophotocoagulation**



SLT Photoregeneration

Gentle and non-invasive, selective laser trabeculoplasty (SLT) has become the therapy of choice for glaucoma management. This advanced, non-thermal treatment works by stimulating a natural healing response in the body to manage intraocular pressure, promoting cellular regeneration without the burn and scar tissue associated with other laser procedures. Ellex offers two SLT systems: the Tango™ SLT/YAG combination laser and the Solo™ integrated SLT laser. Both systems feature a high level of precision, in which parameter settings can be adjusted at 0.1 mJ increments. This capability, coupled with superior energy control and the fastest repetition rate in the industry at 3 Hertz, enables the delivery of quick and highly accurate SLT treatment.



solo™

Integrated SLT Laser

The Ellex Solo™ is a highly effective tool for first-line glaucoma treatments, as adjunct therapy with drugs, and as alternative therapy when drugs or surgery fail.*

- **Fast, 3 Hertz Firing Rate**
- **SLT Treatment Parameters Designed to Industry-Recognized Treatment Protocols**
- **Precise Energy Titration at 0.1 mJ increments (0.3 to 2.0 mJ energy range)**

* Not available for sale in the US.



tango™

SLT/Photodisruptor Combination Laser

The Ellex Tango™ provides selective laser trabeculoplasty (SLT) and YAG capabilities in a single, advanced laser system. Featuring a proprietary dual-mode laser cavity, the Tango ensures efficient delivery of laser energy and is life-tested to deliver 400,000 shots.

- **Selectable SLT or YAG Mode**
- **Fast, 3 Hertz Firing Rate**
- **SLT Treatment Parameters Designed to Industry-Recognized Treatment Protocols**
- **Precise Energy Titration at 0.1 mJ increments (0.3 to 2.0 mJ energy range)**
- **Fine, Two-Point Focusing System in YAG Mode**
- **Ultra Gaussian Beam Profile in YAG Mode**

* Not available for sale in the US.



One Powerful Vision

Ellex Philosophy

Since the introduction of our first ophthalmic laser in 1985, Ellex has been building a knowledge base and reputation for excellence in ophthalmology. Today, more than 15,000 Ellex lasers and ultrasound are used by ophthalmologists around the world to treat and diagnose patients with cataract, glaucoma and retina conditions.

At Ellex, we understand that it's the overall package – technology, people, reliability and commitment – that makes the difference between a one-time equipment sale and a lasting relationship.

It starts in the factory, where all of our laser and ultrasound systems are crafted from premium components and expert manufacturing processes to provide the highest levels of reliability and performance. Once a system is installed, we offer extensive clinical expertise and educational support, supported by a worldwide network of expertly trained field engineers and technical customer service centers in Japan, North America, Europe and Australia. In each of these areas, we strive to create and maintain a culture of customer care that is unmatched. We settle for nothing less.

Configured to Meet Your Needs

Total Solution™ Tables

Each integrated laser system from Ellex can be configured with a Total Solution™ table, designed to meet the needs of ophthalmic offices, ambulatory surgery centers and hospital outpatient clinics.



Wheelchair Accessible,
Mobile



Wheelchair Accessible



Mobile

Portability

The Ellex Super Q® breaks down into two portable cases for safe and easy transport in a passenger vehicle.



© 2011, Ellex Medical Pty Ltd. Ellex, Integre Duo, Integre Yellow, Integre, Super Q, Ultra Q, Solo, Tango, Solitaire, Eye Cubed, Total Solution are trademarks of Ellex Medical Pty Ltd. E&OE. PB00010D



ellex.com

Headquarters

82 Gilbert Street
Adelaide, SA, 5000 AUSTRALIA
+61 8 8104 5200

Japan

4-3-7 Miyahara 4F, Yodogawa-ku
Osaka 532-0003 JAPAN
+81 6 6396 2250

USA

7138 Shady Oak Road
Minneapolis, MN, 55344 USA
800 824 7444

Germany

Ostring 45
63533 Mainhausen GERMANY
+49 6182 9292 95

Australia

Suite 2, Ground Floor, 18-20 Orion Road
Lane Cove, NSW, 2066 AUSTRALIA
1800 817 920

Europe Support Center

108, avenue Marx Dormoy
63000 Clermont-Ferrand FRANCE
+33 4 73 34 18 55

