

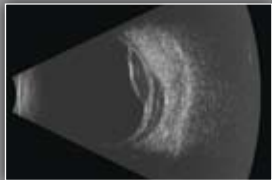


## You are invited to the Fifth European Eye Cubed™ Ultrasound Training Course

**A Satellite Workshop of the XXIII SIDUO Congress, Edinburgh, Scotland**

**Sunday 12 September, 2010**

**10.00 - 4.00pm, The George Hotel**



### Speakers:

Bertil Damato, M.D., PhD  
Royal Liverpool University Hospital  
Liverpool, England

Michel Puech, M.D.  
Explore Vision  
Paris, France



Cynthia J. Kendall, BMET, CDOS, ROUB  
Ellex Innovative Imaging  
Sacramento, USA

Tarek El-Khashab, M.D.  
Leighton Hospital  
Crewe, England



Cathy DiBernardo, RN, CDOS, ROUB  
Wilmer Eye Institute  
Baltimore, USA

Olivier Bergès, M.D.  
Fondation Rothschild  
Paris, France



With the participation of Rona Owen, MbChB, Associate Specialist in Ophthalmology, Sunderland Eye Infirmary, England.

Ellex is very pleased to organize the Fifth European Eye Cubed™ Ultrasound Training Course. This course will provide a full day of hands-on clinical training.

### Course Agenda

The course will commence with a special introduction by Hatem R. Atta, M.D., Aberdeen Royal Infirmary, Aberdeen, Scotland, and President of the XXIII SIDUO Congress.

#### Introduction on Ultrasound

- The role of ultrasound in ophthalmology
- Overview of the clinical benefits of the Eye Cubed

#### Clinical Session: Cataract

- How to perform accurate IOL calculation in various clinical situations
- Anterior segment examination for refractive surgery

#### Clinical Session: Glaucoma

- Diagnosing glaucoma with anterior segment imaging

#### Hands-On Session: Eye Cubed Workshop One

- Biometry software
- Anterior B-Scan
- Posterior B-Scan

#### Clinical Session: Oncology

- Tumors of the posterior and anterior segments

#### Clinical Session: Vitreoretinal Pathologies

- Diagnosing vitreoretinal pathologies with posterior B-Scan

#### Hands-On Session: Eye Cubed Workshop Two

- B-mode guided biometry
- Anterior B-Scan
- Posterior B-Scan
- Biometry software



## Fifth European Eye Cubed™ Ultrasound Training Course | 12 September 2010

### Course Venue & Accommodation

The George Hotel  
 19 - 21 George Street  
 Edinburgh EH2 2PB, Scotland  
<http://www.edinburghgeorgehotel.co.uk/>



If you are attending the SIDUO Congress, you can book your stay at The George Hotel, by completing the applicable fields on the online SIDUO 2010 congress registration form: <http://www.northernnetworking.co.uk/form3.php>.

If you plan to attend the Ellex Ultrasound Course only, you may book your stay at The George Hotel by contacting the SIDUO congress organizers on the following details:

E: [siduo@northernnetworking.co.uk](mailto:siduo@northernnetworking.co.uk) | P: +44 (0) 1355 244 966

Alternatively, if you wish to explore other accommodation options in Edinburgh, please visit: <http://www.siduo2010.org/accommodation.htm>.

### Course Registration

To register for the course, please return completed form to Nicolas Bruel:  
 E: [nbruel@ellex.com](mailto:nbruel@ellex.com) | F: + 33 4 7393 2198

Title \_\_\_\_\_ Full Name \_\_\_\_\_

Practice Name \_\_\_\_\_

Address \_\_\_\_\_

Postcode \_\_\_\_\_ Country \_\_\_\_\_

Daytime Telephone \_\_\_\_\_

Email \_\_\_\_\_

Special Dietary Requirements \_\_\_\_\_

\* Please attach a separate sheet listing names of any additional delegates.

\*\* Please note that the Fifth European Eye Cubed Ultrasound Course is free of charge.



Taking place at The George Hotel, the XXIII Biennial International Congress of Ophthalmic Ultrasound hosted by SIDUO (Societas Internationalis Pro Diagnostica Ultrasonica in Ophthalmologia) will be held in Edinburgh, Scotland from September 12 – 16, 2010.

This congress will appeal to all ophthalmologists, health professionals, echographers and those interested in the field of ophthalmic ultrasound. This year's event will feature well renowned key note speakers, a series of presentations and workshops, poster sessions and a commercial exhibition.

To register for SIDUO 2010, or for more information, please visit: <http://www.siduo2010.org/>

### Travel

The George Hotel is ideally located on the most prestigious street in the New Town district of central Edinburgh.

#### By Air:

Edinburgh International Airport is seven miles from the Hotel.

#### By Rail:

Waverley Train Station is around five minutes' walk from the Hotel while Haymarket is approximately 10 minutes by taxi.

#### By Car:

From all directions, head for the A720 Edinburgh bypass and turn off towards Edinburgh City Centre on the A702. Follow the A702 all the way into the city centre and eventually you will meet the junction with Charlotte Square. Turn right as if heading towards Princes Street, but you will be obliged to turn left before you reach Princes Street. The second turning on the right takes you onto George Street, where you will find the distinctive George Edinburgh Hotel.

Please note: travel costs remain at your own expense.